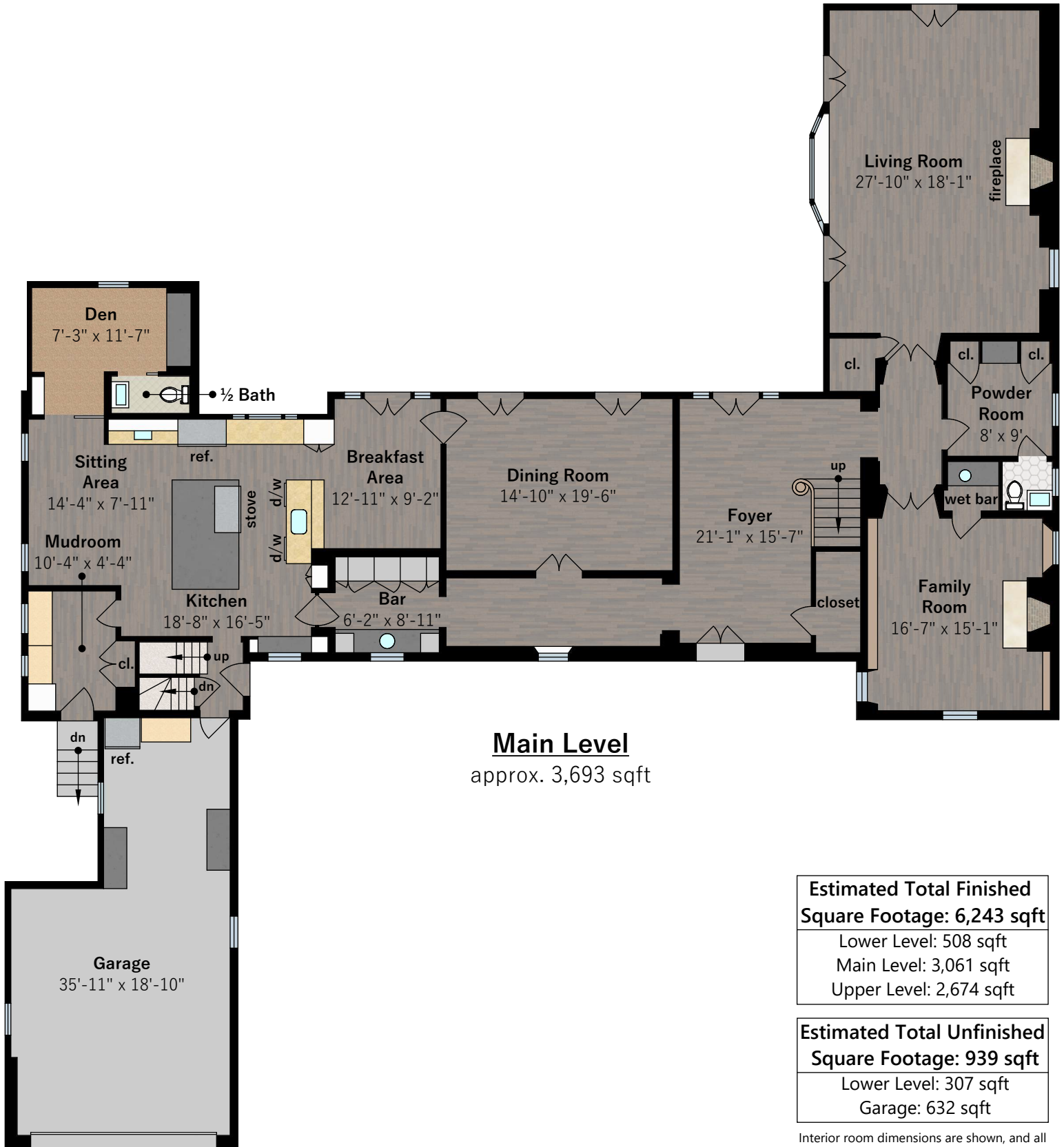


# 61 King Avenue

Piedmont, CA 94611



**Main Level**  
approx. 3,693 sqft

**Estimated Total Finished  
Square Footage: 6,243 sqft**

Lower Level: 508 sqft

Main Level: 3,061 sqft

Upper Level: 2,674 sqft

**Estimated Total Unfinished  
Square Footage: 939 sqft**

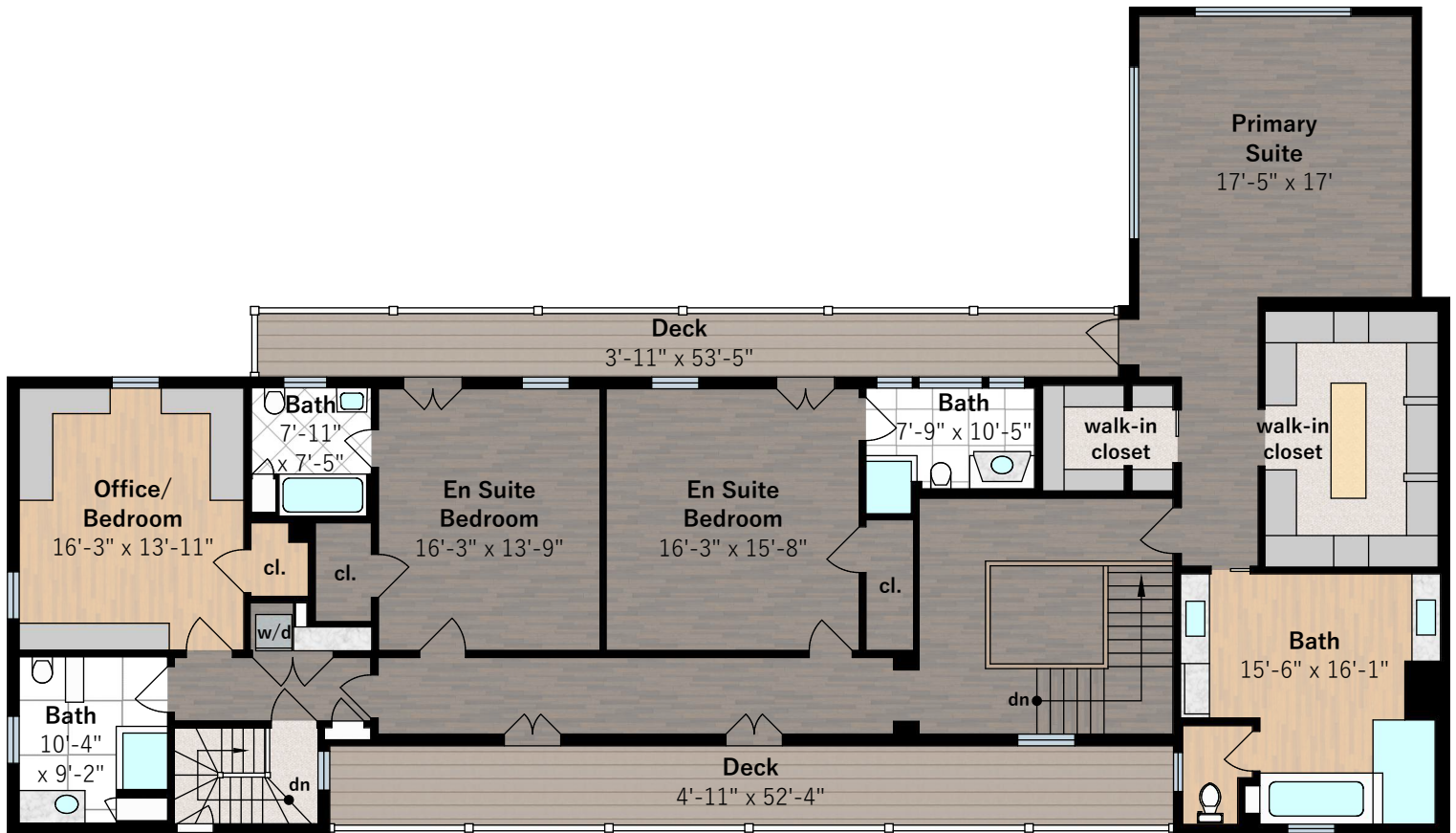
Lower Level: 307 sqft

Garage: 632 sqft

Interior room dimensions are shown, and all square footage measured from perimeter of exterior walls. Decks, porches, and patios are not included in calculations.  
Measured on May 7th, 2023

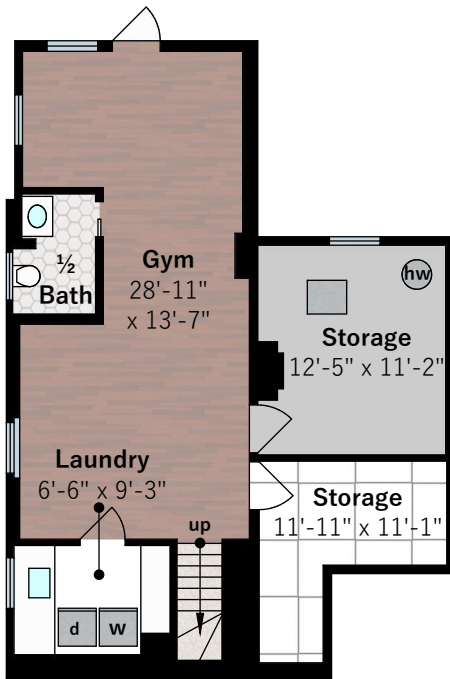
# 61 King Avenue

Piedmont, CA 94611



## Upper Level

approx. 2,674 sqft



## Lower Level

approx. 815 sqft

**Estimated Total Finished  
Square Footage: 6,243 sqft**

Lower Level: 508 sqft

Main Level: 3,061 sqft

Upper Level: 2,674 sqft

**Estimated Total Unfinished  
Square Footage: 939 sqft**

Lower Level: 307 sqft

Garage: 632 sqft

Interior room dimensions are shown, and all square footage measured from perimeter of exterior walls. Decks, porches, and patios are not included in calculations.

Measured on May 7th, 2023

# 61 King Avenue

Piedmont, CA 94611



## Site Plan

lot size approx. .3 acres

